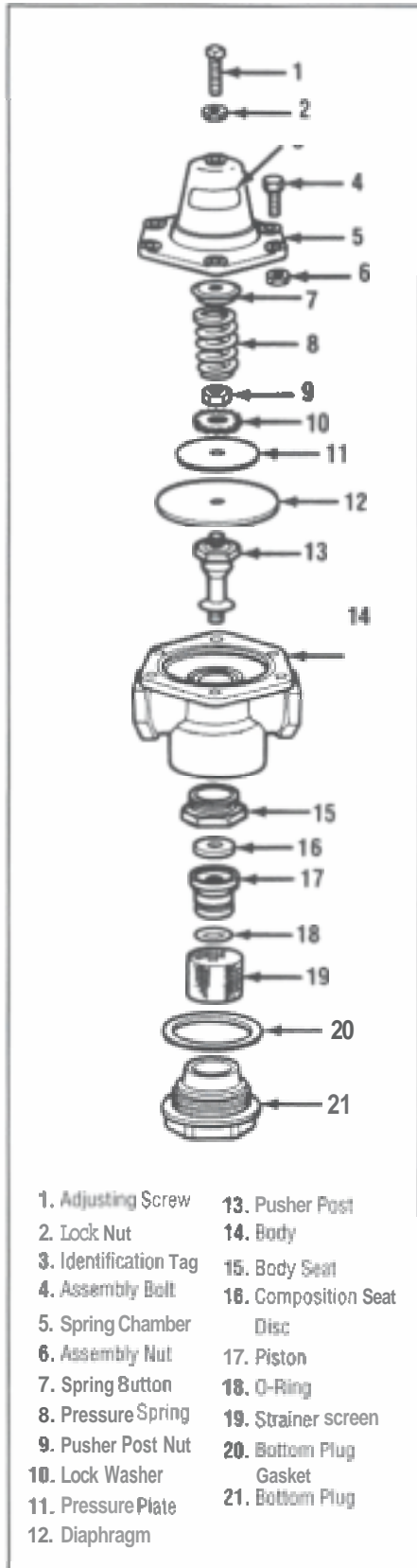




TECHSPEC



DESCRIPTION

The Type E-55 pressure reducing and regulating valve automatically reduces a high inlet pressure to a lower delivery pressure and maintains the lower pressure within close limits even during high flow rates.

SPECIFICATION DATA

Service: Air, water, oil, gases (except steam), and liquids not corrosive to brass.

Sizes: 1/2", 3/4", 1", 1-1/4", 1-1/2", and 2"

Connections: Threaded female inlet and outlet.

Body: Bronze

Maximum Temperature: 180°F

Maximum Initial Pressure: 400 psi

Outlet Pressure Range: 15 to 250 psi per spring chart.

Capacity: Refer to bulletin PRV-E for capacity information.

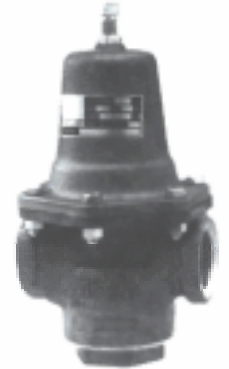
GENERAL INSTALLATION INSTRUCTIONS

Type E-55 regulators should be installed in the horizontal position with the spring chamber upright. For other installation requirements consult the factory. For ease of operation and maintenance, it is suggested that manual shut-off valves be installed upstream and downstream from the valve and a pressure gauge between the regulator and the downstream valve. Before installing the valve, the piping and valve should be thoroughly flushed out to remove any foreign material. Install the valve with the inlet pipe fitted to the inlet connection identified on the valve body. Use a good pipe joint compound on the male pipe threads and do not over tighten the valve connections.

OPERATING INSTRUCTIONS

Adjusting the Delivery Pressure

The regulator's delivery pressure setting is adjusted by turning the adjusting screw (1) at the top of the spring chamber (5) after loosening the adjusting screw lock nut (2). To increase the delivery pressure, turn the adjusting screw clockwise (into the spring chamber). To decrease the delivery pressure, turn the adjusting screw counter-clockwise (out of the spring chamber). Tighten the adjusting screw lock nut after the adjustment has been made. Open a valve or



Type E-55

PRESSURE REGULATOR

This Bulletin No.	TS-E55
Date Of This Issue	MAY 2000
Supersedes Bulletin No.	TS-E55
Dated	JULY 1999

faucet downstream to draw flow and close to check the pressure setting after each adjustment.

MAINTENANCE INSTRUCTIONS

CAUTION: Before attempting to service the regulator be sure to shut off the supply pressure and relieve all pressure from BOTH sides of the valve. Refer to the Type E-55 regulator exploded view for parts identification.

It is not necessary to remove the valve from the line for servicing.

Servicing the Strainer Screen (19), Seat Disc (16), Piston O-Ring (18), and Bottom Plug Gasket (20)

1. Unscrew the bottom plug (21) and remove the strainer screen (19). The strainer screen will normally drop out when the plug is removed. Thoroughly clean the strainer screen and flush the valve body to remove any foreign material that may have collected around the screen.
2. Inspect and if necessary replace the bottom plug gasket (20). If the gasket is to be replaced, remove all traces of the old gasket before reassembly.
3. Insert an Allen wrench in the bottom of the

INSTALLATION, MAINTENANCE & REPAIR PARTS INFORMATION

ISO 9001 Certified

piston (17) and remove the piston by turning in a counter-clockwise direction.

- Remove the composition seat disc (16), and the O-ring (18) from the piston and replace if necessary, lubricating the O-ring with a good quality grease.
- Reassemble the valve in reverse order. After placing the valve in service, readjust the delivery pressure as detailed under Operating Instructions.

Servicing the Pressure Spring (8), Diaphragms (12), and Body Seat (15)

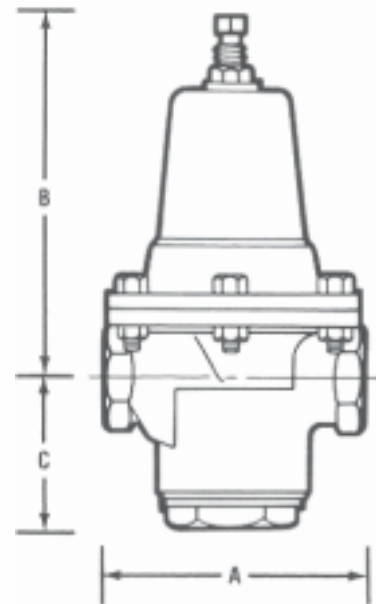
- Loosen the lock nut (2) 1/4 turn and turn the adjusting screw (1) counter-clockwise until the pressure spring (8) is no longer under tension.

NOTE: If the same pressure spring is being installed during reassembly, then when installing the adjusting screw, turn the screw clockwise until the lock nut just touches the spring chamber. When the valve is placed in service the pressure setting should be very close to the original setting.

- Remove the six assembly bolts (4) and nuts (6) securing the spring chamber (5) to the valve body (14). During reassembly, tighten the assembly bolts evenly in an alternate diagonal pattern.
- Lift the spring chamber from the valve body and remove the spring button (7), and pressure spring (8).
- Remove the piston (17), as described under Servicing the Strainer Screen (19), Seat Disc (16), Piston O-Ring (18) and Bottom Plug Gasket (20), above.
- Lift out the diaphragm and pusher post assembly (13) from the top of the valve body.
- If it is necessary to replace the diaphragms, clamp the pusher post hex in a vise and remove the pusher post nut (9). Then re-

move the star lock washer (10), pressure plate (11), and diaphragms from the pusher post. Install the same number of new diaphragms during reassembly.

- Examine all parts for wear or damage and replace if necessary. The body seat (15), can be removed with a socket wrench if it is found that the seating surface is damaged and replacement is necessary. During reassembly, place a small amount of pipe dope on the sealing face.
- Reassemble the parts in reverse order. After placing the valve in service, adjust the delivery pressure as outlined under Operating Instructions.



SPECIFICATIONS

Each Type E-55 pressure regulator is equipped with a pressure spring selected to provide the desired outlet or reduced pressure setting. The range of adjustment or satisfactory "working range" of individual springs is shown below for each valve size. Every regulator has the "set" pressure and range of adjustment stamped on a tag fastened to the valve. The ranges shown below are recommended for best performance.

SPRING RANGES

VALVE SIZE	PARTS NUMBERS & RANGE OF ADJUSTMENT (in psi)				
1/2", 3/4", 1"	#109	#110	#111	#113	#8242
	15-50	25-80	50-110	75-195	100-250
1-1/4", 1-1/2", 2"	#7588	#7589	#7590	#7591	#8774*
	15-25	20-50	40-100	75-150	100-250

*100-250 psi range for 1-1/4", 1-1/2" and 2" sizes available for a slight additional charge.

DIMENSIONS

VALVE SIZE	DIMENSIONS			SHIP. WT. (lbs.)
	A	B	C	
1/2"	4"	5"	2-1/4"	6
3/4"	4"	5"	2-1/4"	6
1"	4"	5"	2-1/4"	6
1-1/4"	5-1/2"	7-7/8"	3-1/4"	17
1-1/2"	5-1/2"	7-7/8"	3-1/4"	17
2"	5-3/4"	8-1/4"	2-7/8"	17

HOW TO ORDER

To order repair parts, individually, refer to the exploded view of the Type E-55 to identify the part required. When ordering, please use the part names listed and provide the valve serial number stated on the identification tag. Also state the following:

"Repair Parts for Type E-55 and provide:

- Valve size
- Service (water, air, oil, etc.)
- Inlet pressure
- Outlet or delivery pressure range and setting

- Part description
- Quantity of each part
- Valve assembly or serial number stated on the metal identification tag on the spring chamber.



IMI CASH VALVE INC.
 2400 7TH AVENUE SW • CULLMAN, ALABAMA 35055
 1-800-879-2042 • FAX 1-800-879-2057
 256-775-8200 • FAX 256-775-8238
 www.cashacme.com



© 2000 IMI CASH VALVE INC.
 PRINTED IN U. S. A.